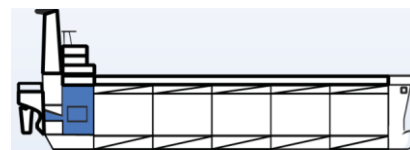


### WATER TREATMENT



## ALPHAFOS

### PHOSPHATE BOILER WATER TREATMENT FOR SCALE AND CORROSION PREVENTION

#### DESCRIPTION

**ALPHAFOS** is a powder form product, soluble in water, with main use the control of water hardness and scale build-up in all types of boilers. As it is phosphate-based, this product reacts with hard water (calcium precipitation salts) to create a soft sludge that will be eliminated through blowdown, and at the same time preserves the phosphate levels in the boiler water. **ALPHAFOS** is used together with **ALKAL-TREAT** for a complete water conditioning.

#### APPLICATION

**ALPHAFOS** can be used for all types of boilers (low pressure and high pressure).

#### USE AND DOSING

For boiler water treatment, phosphate levels must be measured. Using the results and depending on boiler type and pressure, the dosage is adjusted accordingly. Kindly note that for boilers with working pressure between 0-42 bar, the normal phosphate levels are 20-50 ppm. Use **PHOPSHATE TEST KIT** to check phosphate levels and dose according below dosage table.

For untreated boilers, the initial dosage is 23gr of **ALPHAFOS** per 1000 liters of distilled water. Afterward, the dosage is determined by measurements and the dosage chart.

#### PRODUCT PROPERTIES

|              |               |                 |          |
|--------------|---------------|-----------------|----------|
| Appearance:  | Solid         | pH (undiluted): | Alkaline |
| Miscibility: | 100% in water | Flash Point:    | None     |

| Phosphate (ppm) | CHEMOPHOS dosage (g/tons) |
|-----------------|---------------------------|
| 0-10            | 23                        |
| 10-20           | 12                        |
| 20-50           | 0                         |
| over 50         | Blowdown                  |

- ✓ Controls phosphate levels
- ✓ Prevents corrosion
- ✓ Maintains water hardness
- ✓ Sludge control
- ✓ Very soluble
- ✓ Cost effective

#### PROBLEMS SOLVED

- ✓ Water hardness
- ✓ Sludge
- ✓ Corrosion
- ✓ Boiler performance

#### APPLICATION AREAS

- ✓ All types of boilers

PRODUCT CODE: WT 294