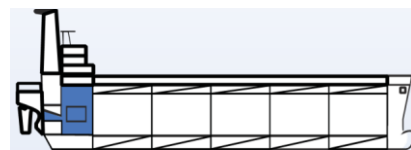


WATER TREATMENT



ANTIFREEZE 50

CONCENTRATED ANTIFREEZE FOR CLOSED CIRCUIT
ACHIEVING -45°C

DESCRIPTION

ANTIFREEZE 50 is a concentrated antifreeze-product perfect for the protection of the cooling water systems due to the comprised corrosion inhibitors. As it is ethylene glycol based, it has the ability of lowering the freezing point of liquid in a cooling system as well as also rising the boiling temperature of water.

APPLICATION

ANTIFREEZE 50 can be used for all types of boilers (low pressure and high pressure), for all year around and is suitable for all closed cooling circuits.

USE AND DOSING

Add **ANTIFREEZE 50** in the expansion tank or in a suitable circulation system. For achieving temperature -15°C add a 50:50 mixture of **ANTIFREEZE 50** and distilled water. For achieving temperature -25°C , add 75% of **ANTIFREEZE 50** and 25% distilled water. If **ANTIFREEZE 50** is used without any dilution a maximum of -45°C can be reached.

PRODUCT PROPERTIES

General Instructions: Avoid spillage, splashing and mishandling. Precautionary measures for body protection are strongly recommended before and during use.

Appearance:	Liquid	pH (undiluted):	Neutral
Type:	Water based	Flash Point:	None

- ✓ Protects cooling systems from freezing water
- ✓ Protects cooling systems from high temperatures
- ✓ Corrosion inhibitor
- ✓ Excellent heat transfer
- ✓ Cost effective

PROBLEMS SOLVED

- ✓ Corrosion
- ✓ System performance

APPLICATION AREAS

- ✓ All closed cooling circuits

PRODUCT CODE: WT 338