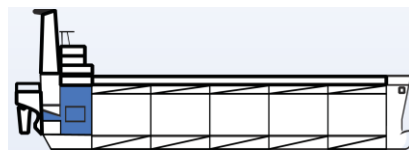




### WATER TREATMENT



## CHLOR-ACTIVE

### CHLORINE-BASED DISINFECTION AND CLEANING AGENT LIQUID

#### DESCRIPTION

**CHLOR-ACTIVE** is a specialized product used for disinfecting water supplies on board of ships. Its main component, sodium hypochlorite is a general biological active solution that acts against microorganisms, bacteria, algae and can be used for general disinfection.

#### APPLICATION

Not only **CHLOR-ACTIVE** is suitable for water purification but it can also be used for swimming pools, Jacuzzis facilities and also for water and sewage water systems.

#### USE AND DOSING

**CHLOR-ACTIVE** can be applied by all conventional means and can be used as a general cleaner. After the application, chlorine measurements must be conducted as the residual chlorine in drinking water should range between 0.5 and 2 (max) ppm, in order to have a successful protection. Dilute 20 ml of **CHLOR-ACTIVE** for every m<sup>3</sup> of water.

#### PRODUCT PROPERTIES

Appearance:	Liquid	pH (undiluted):	Alkaline
Type:	Water based	Flash Point:	None

- ✓ Water disinfectant
- ✓ Acts against bacteria and microorganisms
- ✓ Use on water systems
- ✓ Very cost effective
- ✓ Easy to apply

#### PROBLEMS SOLVED

- ✓ Water contamination
- ✓ Bacteria
- ✓ Microorganisms
- ✓ Algae

#### APPLICATION AREAS

- ✓ Water systems

PRODUCT CODE: WT 320